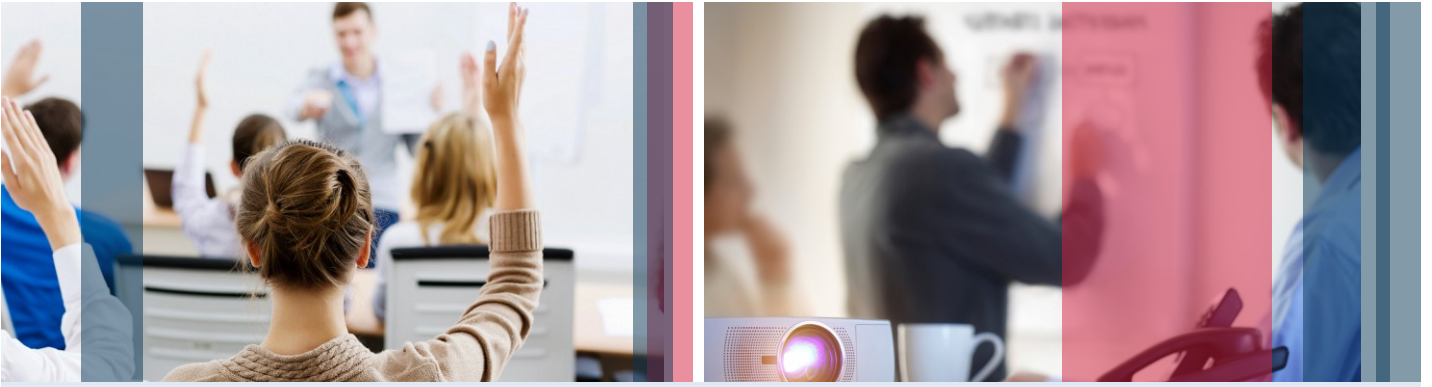


MBA

Healthcare Leadership and Management

12 Months Study | UK Degree

HEA



MBA

Healthcare Leadership and Management



Available Classes:
Evening: Monday to Thursday

Primary Language of Instruction:
English

Study Location Options:
Alexander College, Larnaca and Paphos

Why study for a Canterbury Christ Church University degree in this course?

- 12 Months Study Duration
- UK University Degree from CCCU
- Recognised Internationally
- Recognised by KYSATS
- State grant up to €3417 per year



Course Insight

In Healthcare increasing numbers of professionals at all levels are required to have the knowledge and skills to lead and manage complex change in rapidly shifting global industry environments.

This MBA is specially aimed at those with leadership and managerial roles within the health service. At a time of major changes in healthcare in Cyprus and across the world, the programme will facilitate career development opportunities for those working in health care within the public and private sectors in Cyprus and abroad.

This programme builds on your previous work experience and develops reflective insights to enhance organisational outcomes. Such a programme provides health practitioners with an opportunity to develop their leadership and management skills as well as to enhance their interprofessional practice. The programme will address healthcare issues from global, interprofessional, multi-disciplinary, business-oriented and person centred perspectives.

Content and Duration

This is a one year full-time programme however, the course is also available on a part-time basis, two evenings a week over a period of 24 months. The full-time mode of study is three evening sessions per week. You will need approximately six to nine contact hours a week, but as independent study is fundamental, the total study time will be around 36 hours a week. The full MBA course consists of 8 modules in total, including a dissertation of up to 15,000 words.

What will you gain from this course?

This MBA course is designed to support your career prospects and enable you to gain greater awareness of how to take forward your professional development and enhance your service, with an in-depth understanding of leading and managing teams aligned to current and emerging health and social agendas.

You will gain:

- a systematic understanding of knowledge, and a critical awareness of current problems and/or new insights, much of which is at, or informed by, the forefront of academic discipline in management and leadership or your area of professional practice
- a comprehensive understanding of methodologies and techniques applicable to your own research or advanced scholarship
- originality in the application of knowledge, together with a practical understanding of how established techniques of research and enquiry are used to create and interpret knowledge in your discipline
- conceptual understanding that enables you to critically evaluate current research and advanced scholarship in the discipline and evaluate methodologies and develop critiques of them and, where appropriate, to propose new hypotheses.

Entry Requirements

Candidates must normally provide evidence of a good honours degree in a relevant subject. They are also expected to have some years of



professional experience in healthcare. If you are a graduate from a non-English speaking institution, you will be required to provide evidence of your English Language knowledge.

Teaching and Learning

The programme involves both extensive independent research and discussion in the context of workshops, designed to encourage the development of your critical, analytical and reflective skills. Material is delivered through a mixture of lectures, group discussion, case studies, experiential learning, project work, individual practical projects, visits to organisations etc.

Assessment

A variety of assessment methods are used including written assignments and group and individual presentations.

Graduation Requirements

For the MBA in Healthcare Leadership and Management, you will be required to complete all modules in order to earn a total of 90 ECTS credits (180 UK Credits). You will also need to complete a dissertation of up to 15,000 words.

Where Next?

Industrialisation continues to eliminate many of the traditional roles in health services. However, it has also created a need for trained, well-educated administrators to oversee these expansive systems - a significant benefit of this MBA is a more flexible career path for professionals who want to make a positive impact by taking on leadership positions.

Course Structure

MBA Healthcare Leadership and Management
(12 Months, Full-time Study)

Year	Module Title	Credits (ECTS)	Award
1	Strategy	10	MBA Degree 90 Credits
	Leading and Managing Change	10	
	Business Planning	10	
	Marketing & Service Management	10	
	Leadership for Innovation and Entrepreneurship	10	
	Transforming Healthcare Quality through Evaluating Outcomes	10	
	Research and Critical Inquiry Methods	0	
	Dissertation	30	

1 UK Credit = 0.5 ECTS (e.g. 15 credits = 7.5 ECTS)

It is the intention of the University and Alexander College to deliver the course/modules as published in this brochure. To ensure our provision is kept relevant and current, the University and/or the College may change, combine or withdraw courses/modules in response to stakeholder feedback or limited demand.

**BELIEVE IN
YOURSELF**



Information / Registration:

 **70002592**

Larnaca (Main):

2 Artas Street, Aradippou 7102, Larnaca
Tel: (+357) 24532373,
Email: info@alexander.ac.cy
Web: www.alexander.ac.cy

Paphos:

88 Tassos Papadopoulos Ave., 8026 Paphos
Tel: (+357) 26272323,
Email: info@alexander.ac.cy
Web: www.alexander.ac.cy



**ALEXANDER
COLLEGE**
CYPRUS